

Who Can Become a Member?

Membership is open to any organization with an intentional focus on attracting:

- a. Groups with grassroots members who are directly impacted by immigration policies
- b. Groups whose focus lies beyond “traditional” immigrant rights work, including but not limited to racial and economic justice, police and prison abolition, criminal legal reforms, and/or policing reform, LGBTQIA+ advocacy, and climate justice

Membership Dues:

- a. \$100 per year for organizations with a budget of less than \$100,000 annually
- b. \$250 for organizations with budgets between \$101-500,000
- c. \$450 for orgs with budgets between \$501,000-\$1 million
- d. \$600 for orgs with budgets between \$1-3 million
- e. \$800 for orgs with budgets over \$3 million
- f. We strongly encourage you to contact us if you are unable to meet the dues

Solidarity for the Win

The challenges are real and the walk is steep, but we believe that together we can win the inclusive, vibrant, and compassionate California that we all deserve. Join us in this mission and help make that future more real and more close with your partnership.



Please contact us at membership@caimmigrant.org for more information.

w: Caimmigrant.org

FB: [California Immigrant Policy Center](#)

IG: [Caimmigrant](#)

Twitter: [@CALimmigrant](#)



Meeting the Moment



We are at a time where the great problems confronting our communities require more solidarity than ever: climate change, mass incarceration, the lack of affordable housing, and increased xenophobic rhetoric, all amidst rollback on policies advancing racial and LGBTQ+ equity. We recognize that there are many organizations that do work in these spaces and that united, we are stronger.

Building power at the intersections means we all get free.

The benefits of membership include:

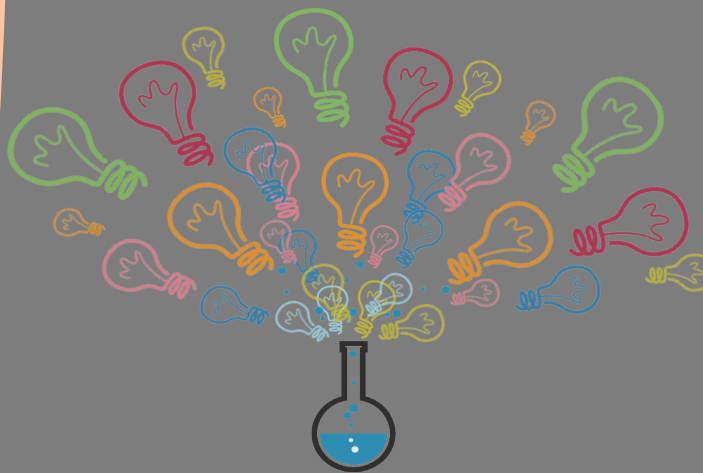


1. **Resources:** Your membership grants you access to all of CIPC's trainings each year as well as preferred access to limited-capacity, in-person events such as Immigrant Day of Action and state-wide convenings.

2. **Discounts:** Member organizations will receive a discount for CIPC events.

3. **Connection:** Be part of a state-wide community and all of them opportunities for arning, networking, and amplifying the work towards a just and equitable California.

A vote on campaign priorities: As a member, you will have the opportunity to shape a truly intersectional justice movement by identifying and advancing policy priorities that make California more fair and accessible to all of our communities.



Quarter 1: Members submit campaign ideas



Quarter 2: Voting on proposals



Quarter 3: Top 2 Proposal advance



Quarter 4: We go to Sacramento together!

That's where YOU come in.

